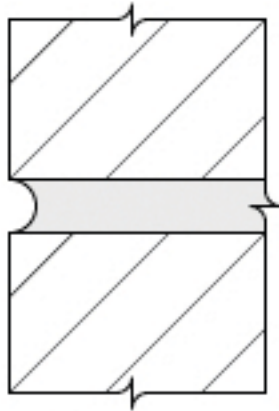


# Mortar

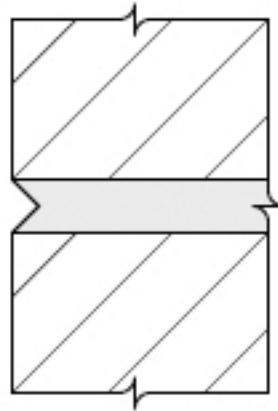
Mortar joint finishes fall into two classes: tooled and troweled joints. In the tooled joint a special tool is used to compress and shape the mortar in the joint. In the troweled joint excess mortar is cut off (struck) with the trowel with no further finishing.

Of the mortar joints illustrated below only the concave, v-shapes, grapevine, and weathered are recommended for exterior applications.



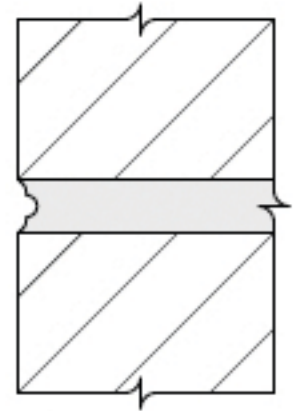
**Concave**

Severe weather resistance  
(Tooled joint)



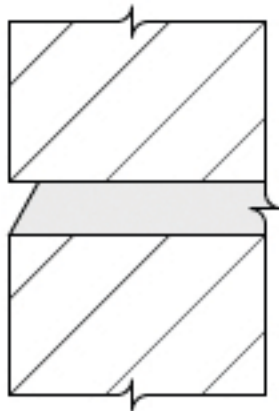
**V-Shape**

Severe weather resistance  
(Tooled joint)



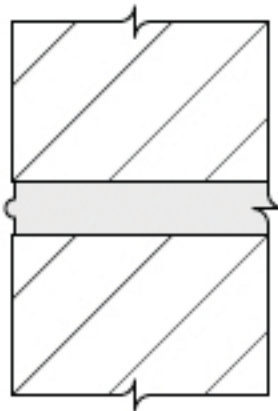
**Grapevine**

Severe weather resistance  
(Tooled joint)



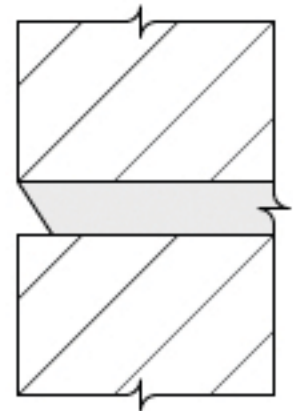
**Weathered**

Severe weather resistance  
(Troweled joint)



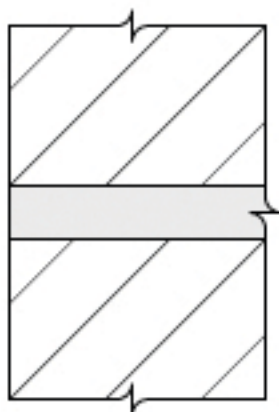
**Beaded**

Moderate weather resistance  
(Troweled joint)



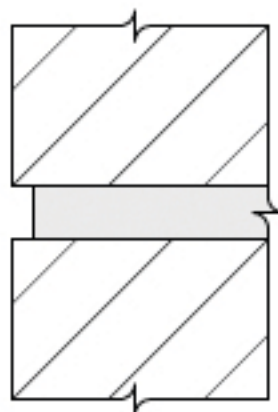
**Struck**

Moderate weather resistance  
(Troweled joint)



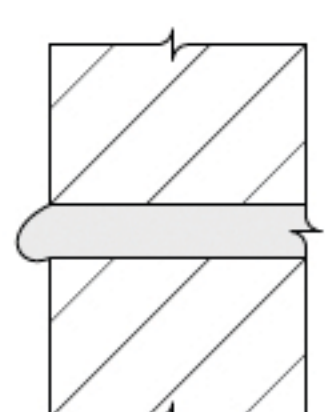
**Flush**

Poor weather resistance  
(troweled joint)



**Raked**

Poor weather resistance  
(troweled joint)



**Extruded**

Poor weather resistance