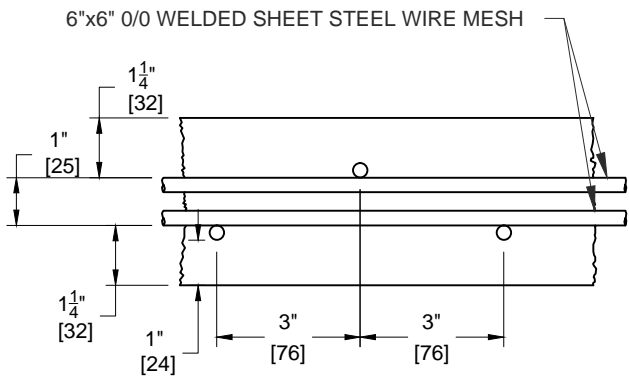


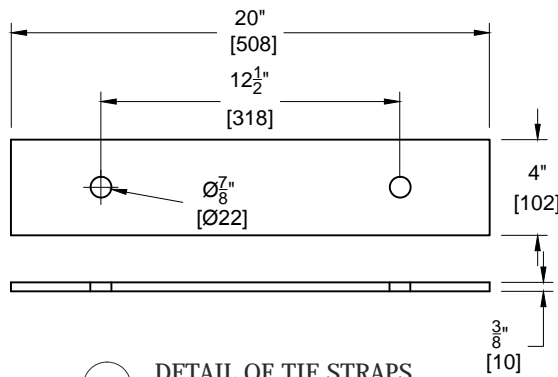
1 CONCRETE REINFORCING LAYOUT
Scale: 1:50



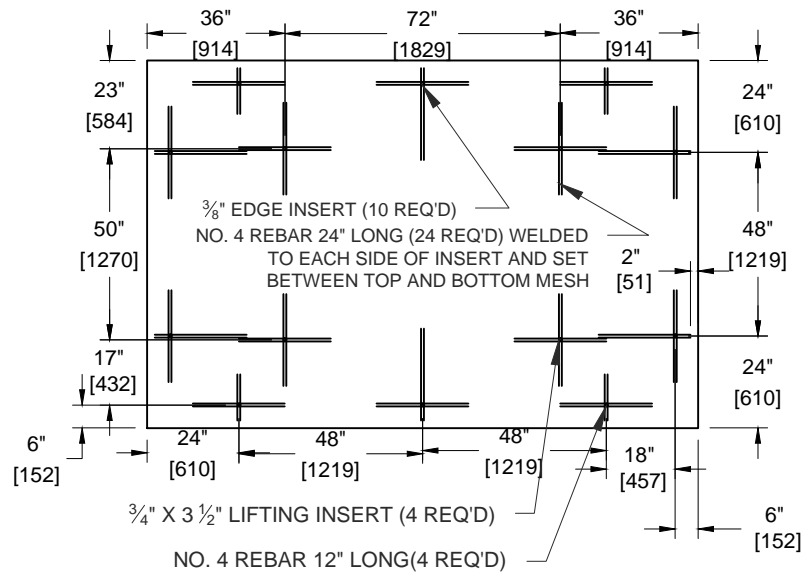
2 SECTION THRU SLAB
Scale: 1:50



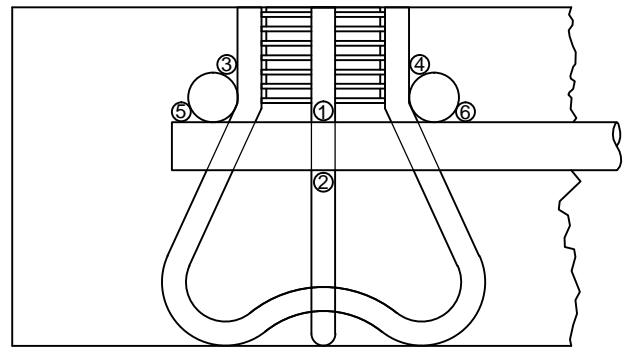
3 SECTION THRU SLAB (ACROSS SHORT AXIS)
Scale: 1:4



4 DETAIL OF TIE STRAPS
Scale: 1:8



5 INSERT LAYOUT
Scale: 1:50



6 INSERT DETAIL
Scale: 1:2

BOTTOM BAR TO BE TIED AGAINST INSERT AT POINTS 1 AND 2. (BOTTOM BAR ON OPPOSITE SIDE OF INSERT TO BE TIED SIMILARLY.)

TOP BARS TO BE TIED AGAINST INSERT AT POINTS 3 AND 4; ALSO AGAINST BOTTOM BAR AT POINTS 5 AND 6 AND SIMILARLY AGAINST BOTTOM BAR ON OTHER SIDE OF INSERT.

SPECIFICATIONS:

1. REINFORCING SHALL BE STRUCTURAL GRADE DEFORMED BARS.
2. CONCRETE SHALL BE 35 MPA CONCRETE OF TYPE H.S. CEMENT, Ø^{3/8"} MAX AGGREGATE, VIBRATED AND CURED.
3. WEIGHT IS APPROXIMATELY 1910 KG. 8% ±2% AIR CONTENT. 6-8" SLUMP. MAX WATER/CEMENT RATIO 0.45. MINIMUM STRIPPING STRENGTH OF 15 MPA. MINIMUM COVER SHALL BE 25mm.
4. BROOM FINISH IN DIRECTION OF LONG AXIS
5. TOLERANCE ACCORDING TO CSA A23.4-09 CLAUSE 12



BOAT LAUNCH SLAB

March 6, 2012

CUSTOM PRODUCT

SASKATOON, SK

SCALE - NOTED

DRAWN BY: DB

DRAWING NUMBER BLS

NO.	REVISION	DATE
-----	----------	------